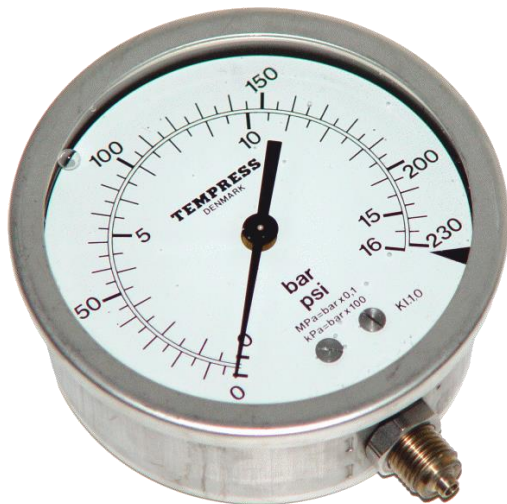


Pressure gauge - Direct mounted DN100**Type A12**

Date: April 2019

Sheet No.: A12

**Stainless Steel Pressure Gauge**

- The Tempress A1203 pressure gauge has been designed and constructed using AISI 316 stainless and acid-proof steel
- Vibration proof
- Long term stable
- Connection: Bottom or rear Long-term stable
- Scale in accordance with international standard
- DNV approved

Application

This series of pressure gauges is well suited for application in general industry, marine industry as well as for auxiliary installation in the food industry.

Specifications	
Pressure Gauge	DN 100 Type A1203
Case material	AISI 316
Front glass	Acrylic
Option	Toughened glass or polycarbonate
Front ring	AISI 316
Liquid filling	>2 bar Glycerine <2 bar Silicone Option: Dry gauge
Connection	AISI 316 See data sheet "Connectors"
Measuring system	AISI 316
Range	From -1 bar through 1600 bar, See ordering key
Minimum span	1 bar
Accuracy	Cl. 1.0 ($\pm 1\%$ FS)
Measuring units	bar, Kpa, Mpa, Kp/cm ³ , Kg/cm ² , lb/in ² , psi, mH ₂ O mbar, "HG, cmHg, When dual scale marking is selected, the main unit is the inner scala

TEMPRESS reserves the right to changes without notice

Agent/Dealer:



Sønderskovvej 10, DK-8362 Høring.
Phone: 8932 5200
E-mail: sales@tempress.dk