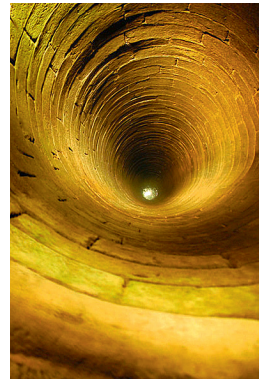
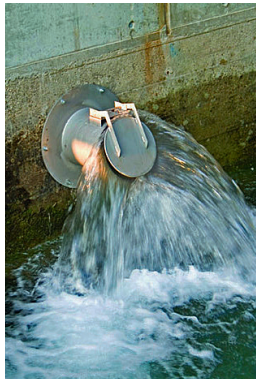




Image for illustration only

The NIVA Level Controller MS1 is the ideal solution to control liquid levels with limited switching space, e.g. in:

- Pump stations
- Wells
- Pump chambers



The NIVA Level Controller MS1 is engineered especially for use in sewage works and pumping stations with liquids heavily charged with solid matter such as raw sewage etc. Thanks to the good chemical and thermal properties our level controllers are resistant to lees, uric acid, fecal sewage water, oils, petrol, diesel oil, emulsions, alcohol, fruit acids, and even many chemicals. For use at temperatures of up to 80 °C (176 °F).

Available versions:

| Type | Cable | Cable length (approx.) | Order Number |
|------|----------------------------------|------------------------|--------------|
| SPDT | TPR/PVC 3 x 0,75 mm ² | 5m (16ft) | 40 000105 |
| SPDT | TPR/PVC 3 x 0,75 mm ² | 10m (30ft) | 40 000110 |
| SPDT | TPR/PVC 3 x 0,75 mm ² | 20m (65ft) | 40 000120 |
| SPDT | TPR/PVC 3 x 0,75 mm ² | 30m (98ft) | 40 000130 |

Other cable types and lengths are available upon request

Application:

For use in municipal, industrial, commercial and domestic applications.

Electronic connection:

| Connection of level controller | Wire | | |
|------------------------------------|----------|----------|-------|
| | gray | black | brown |
| For emptying a tank normally open | insulate | X | X |
| For filling a tank normally closed | X | insulate | X |
| Alarm high level | insulate | X | X |
| Alarm low level | X | insulate | X |

Technical data subject to change

Technical data:

| | |
|----------------------|---|
| Specific weight: | 0.95 - 1.05 or according to specification |
| Max. temperature: | 80°C |
| Breaking capacity: | 1mA / 4V - 5A / 250V* |
| Switch point: | 10° |
| Protective system: | IP 68 / 7 bar |
| Equipment group: | II |
| Cable cross section: | 3x0.75 mm ² |
| Height / diameter: | 180 / 100 mm |
| Housing quality: | Polypropylene (PP) |
| Housing Color: | Orange |
| Cable quality: | TPR/PVC |
| Cable color: | Orange |

* Micro-switch with gold-plated contacts made especially for low currents in electronic circuits